

Youth Online: High School YRBS



Massachusetts 1993 — 2013 Results

[Contact Us](#)
[Help](#)
[View 2 Locations](#)
[View 2 Years for 1 Location](#)

CHOOSE TABLE CONTENT

Question:
Location:
Year:

FILTER DATA

Years: 1993 - 2013

Health Topics

Display Only:

- Unintentional Injuries and Violence
- Tobacco Use
- Alcohol and Other Drug Use
- Sexual Behaviors
- Dietary Behaviors
- Physical Activity
- Weight Control
- Other Health Topics
- All Health Topics

Sex

TABLE DISPLAY OPTIONS

Question Direction:

- Greater Risk
- Less Risk

Decimal Place:

- 0
- 1
- 2

Variance:

- 95% CI
- Standard Error
- None

Display Cell Size:

- Yes
- No

[Get Link](#)
[Print Graph](#)
[Export to Excel](#)

Include Only:

- Female
- Male
- Both Males and Females

Race/Ethnicity

Include Only:

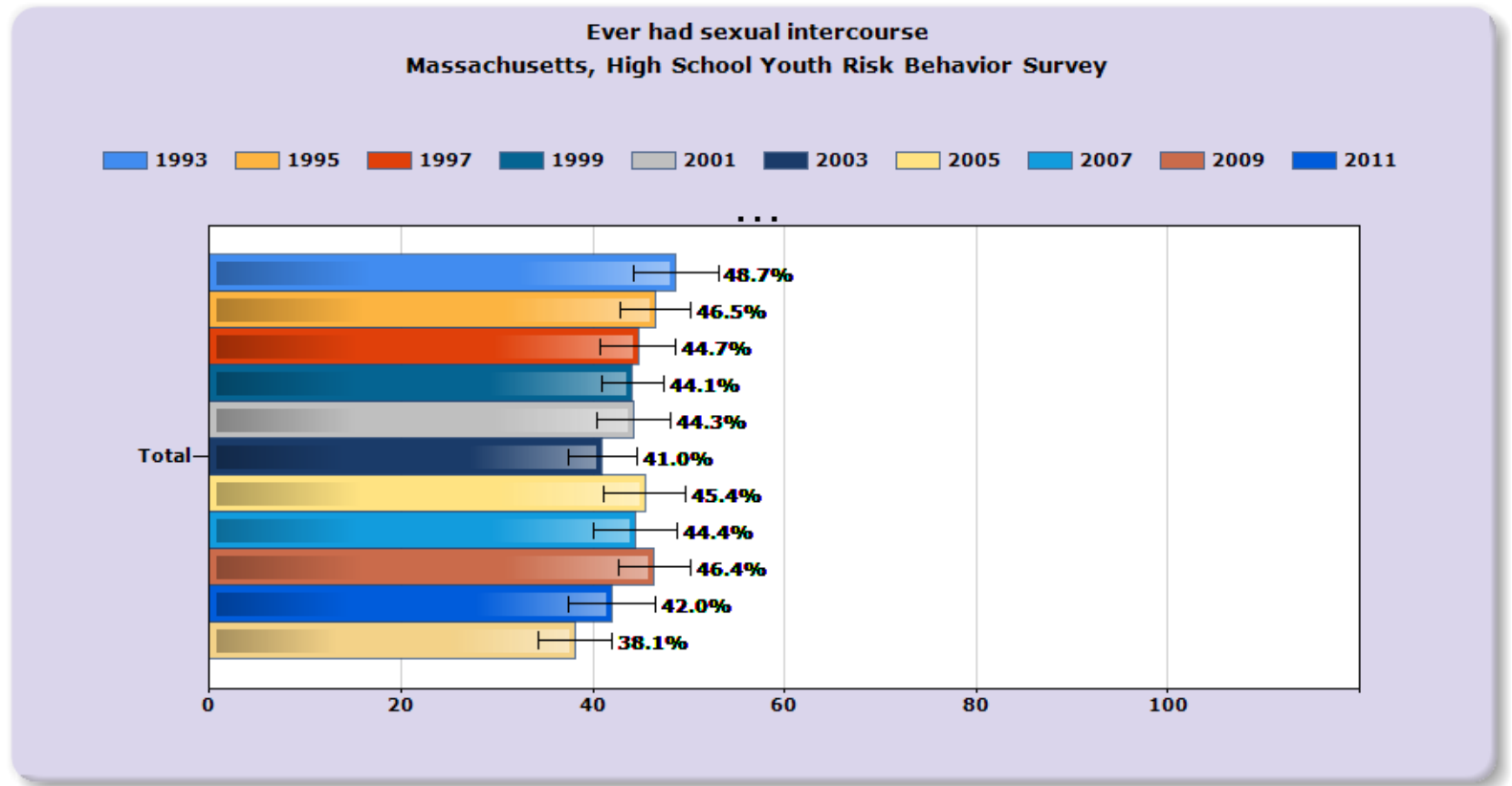
- American Indian or Alaska Native
- Asian
- Black or African American
- Hispanic or Latino
- Native Hawaiian or Other Pacific Islander
- White
- Multiple Race
- All Races/Ethnicities

Grade

Include Only:

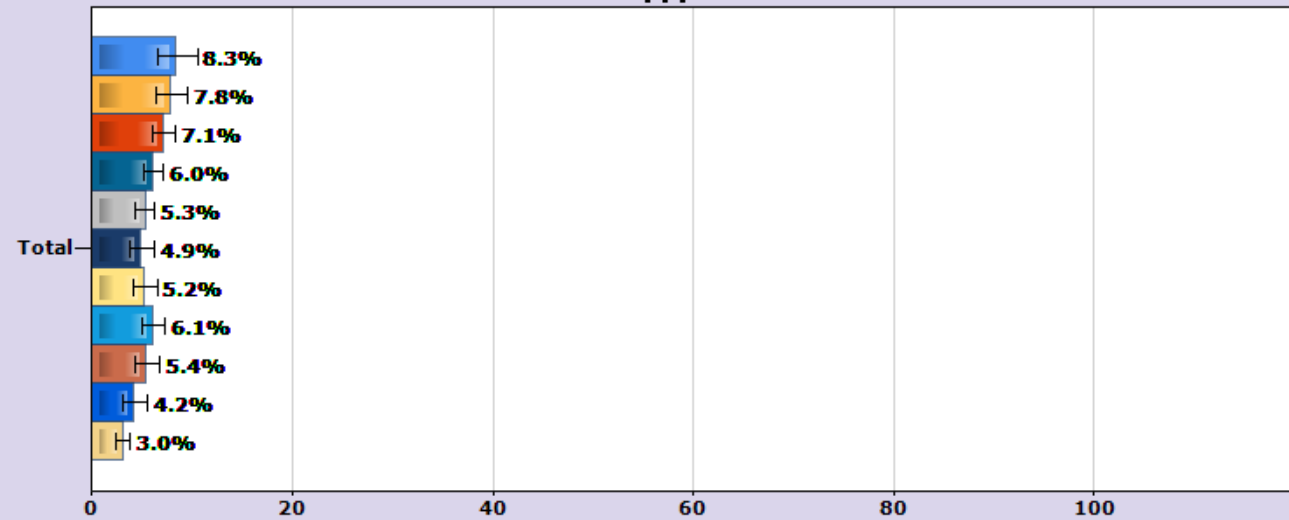
- 9th
- 10th
- 11th
- 12th
- All Grades

[Remove All Filters](#)

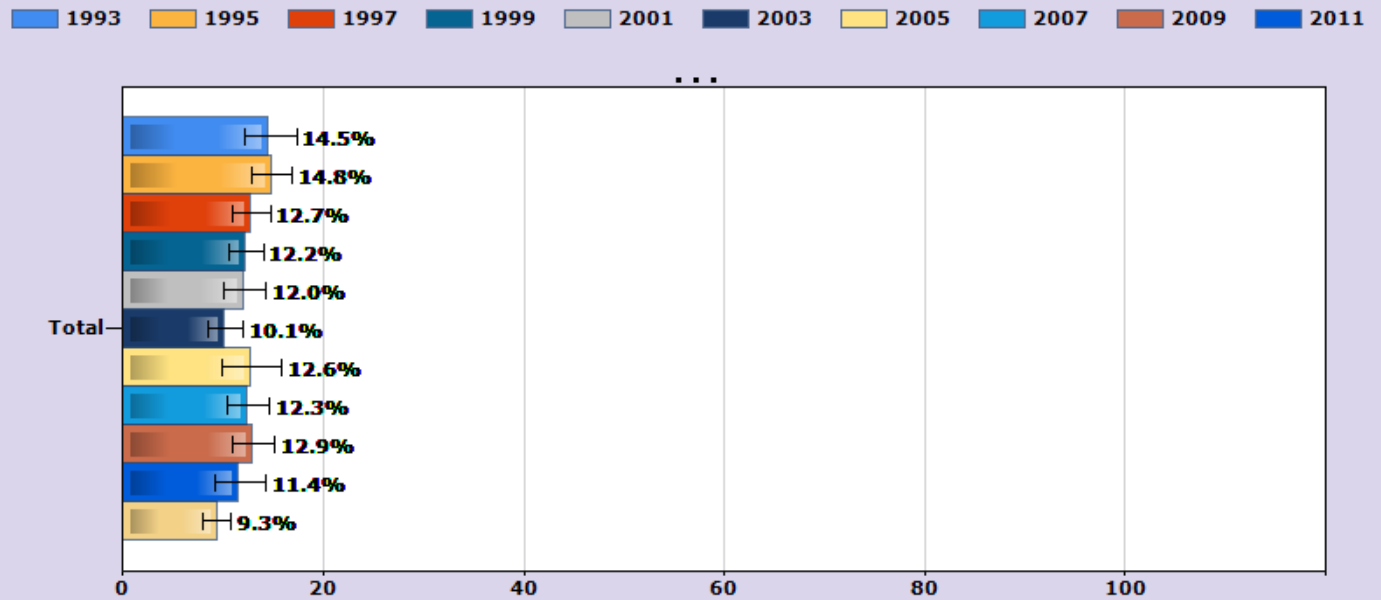


Had sexual intercourse before age 13 years (for the first time) Massachusetts, High School Youth Risk Behavior Survey

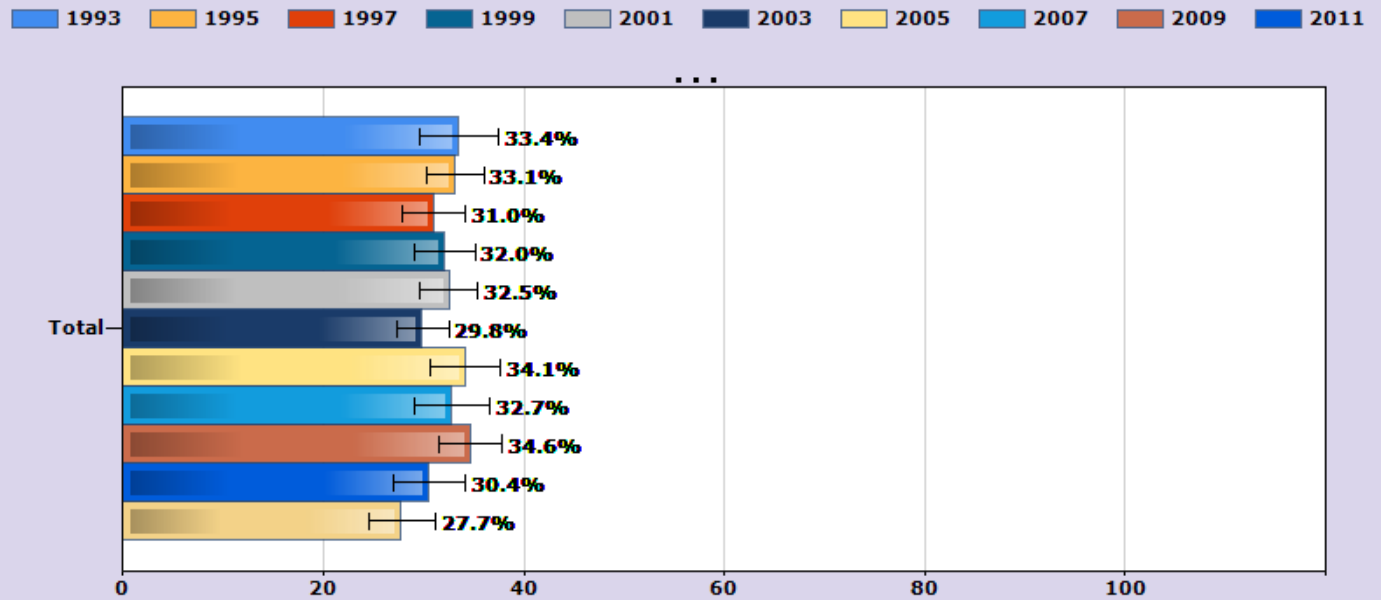
1993 1995 1997 1999 2001 2003 2005 2007 2009 2011



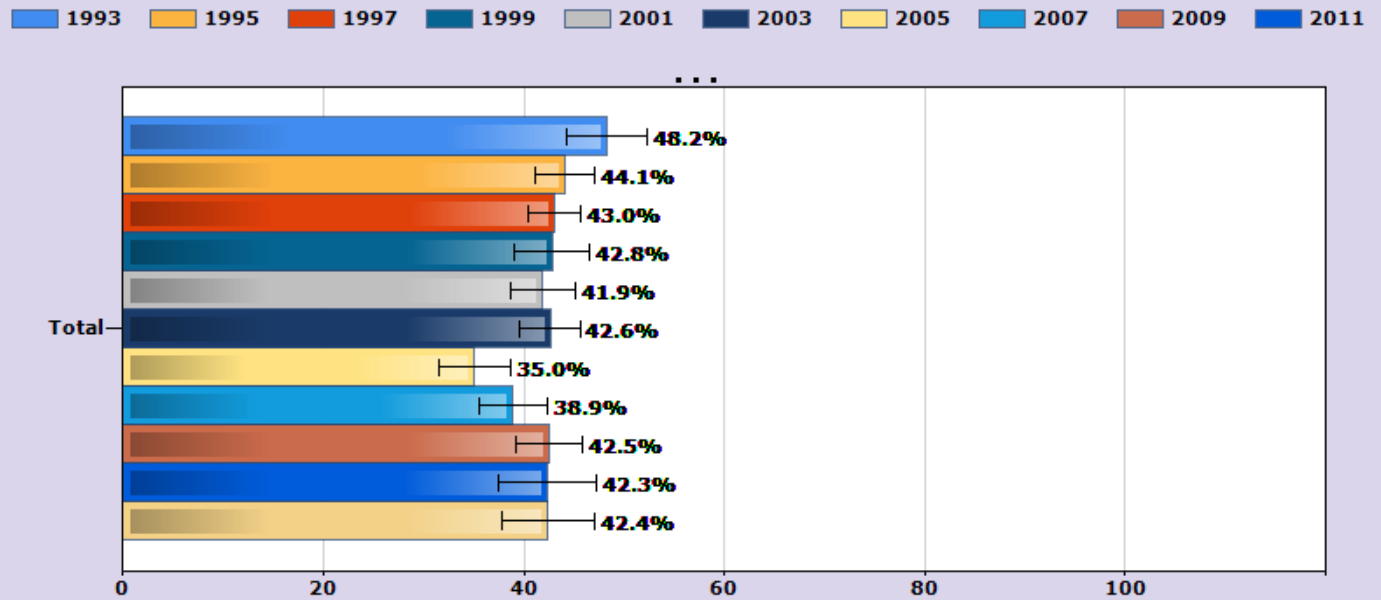
Had sexual intercourse with four or more persons
 (during their life)
Massachusetts, High School Youth Risk Behavior Survey

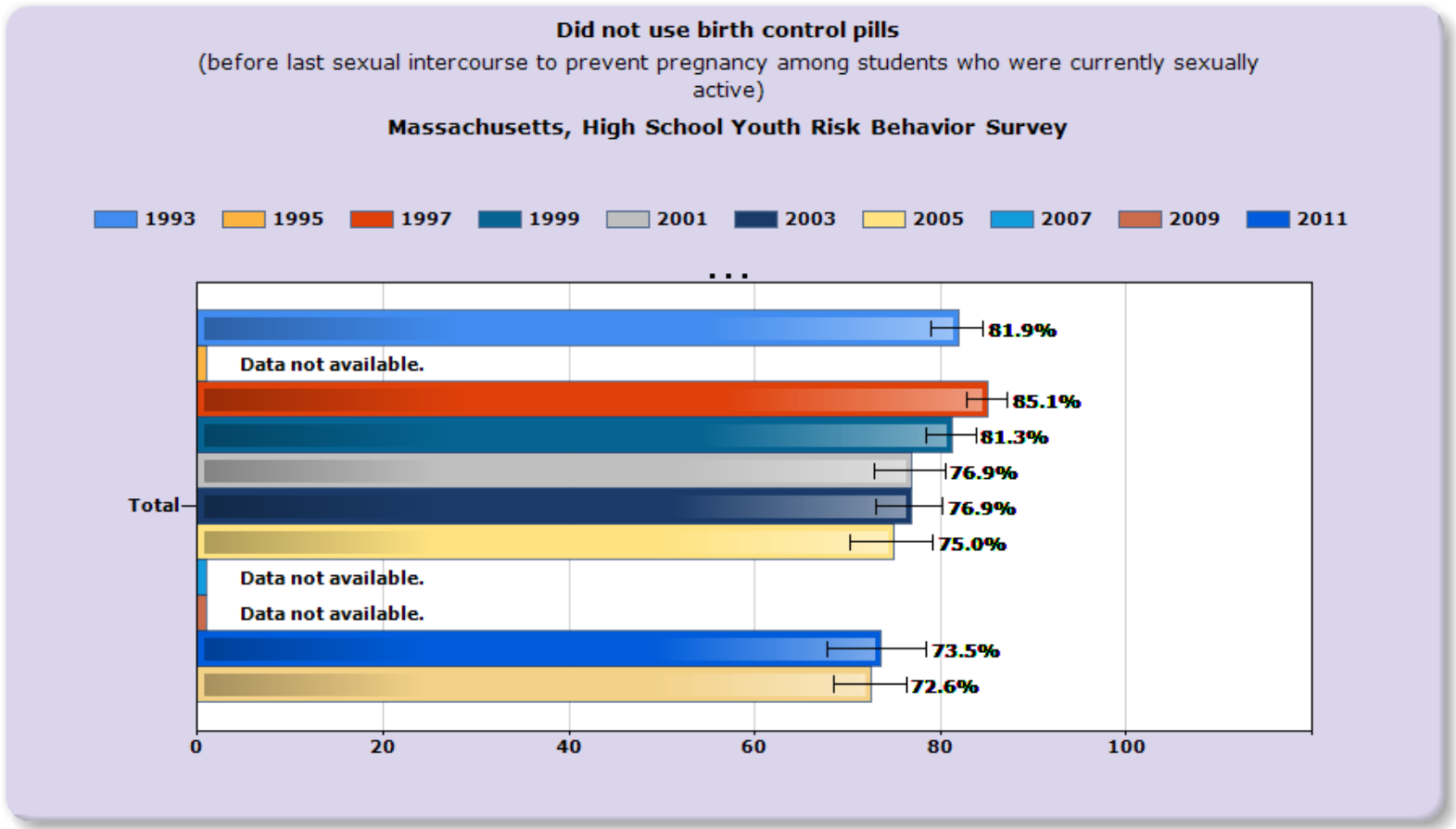


Were currently sexually active
 (sexual intercourse with at least one person during the 3 months before the survey)
Massachusetts, High School Youth Risk Behavior Survey



Did not use a condom
 (during last sexual intercourse among students who were currently sexually active)
Massachusetts, High School Youth Risk Behavior Survey

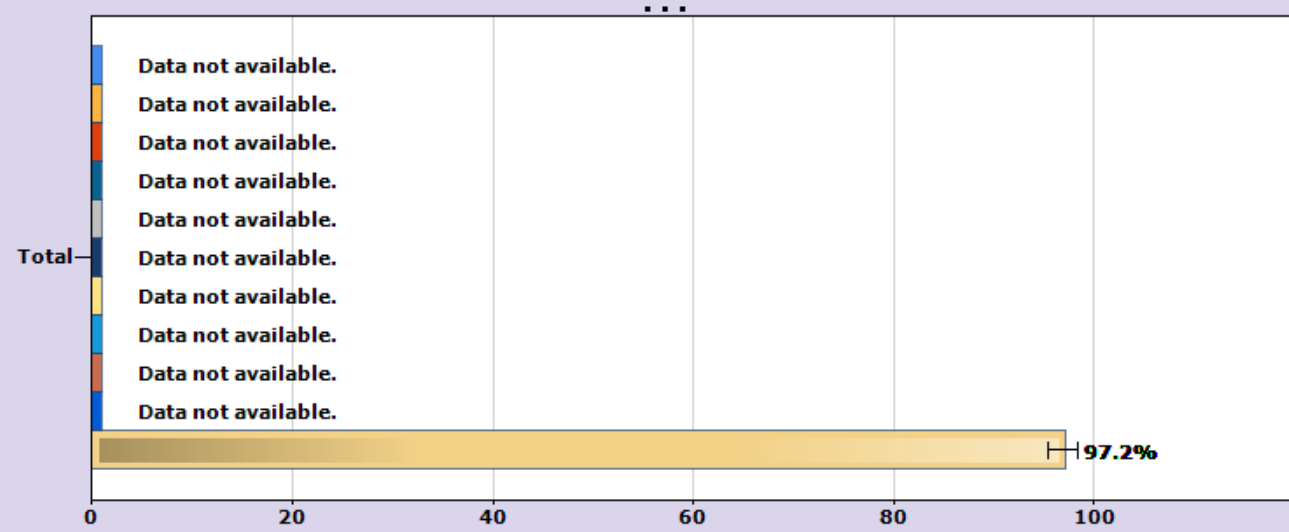




Did not use an IUD (e.g., Mirena or ParaGard) or implant (e.g., Implanon or Nexplanon)
(before last sexual intercourse to prevent pregnancy among students who were currently sexually active)

Massachusetts, High School Youth Risk Behavior Survey

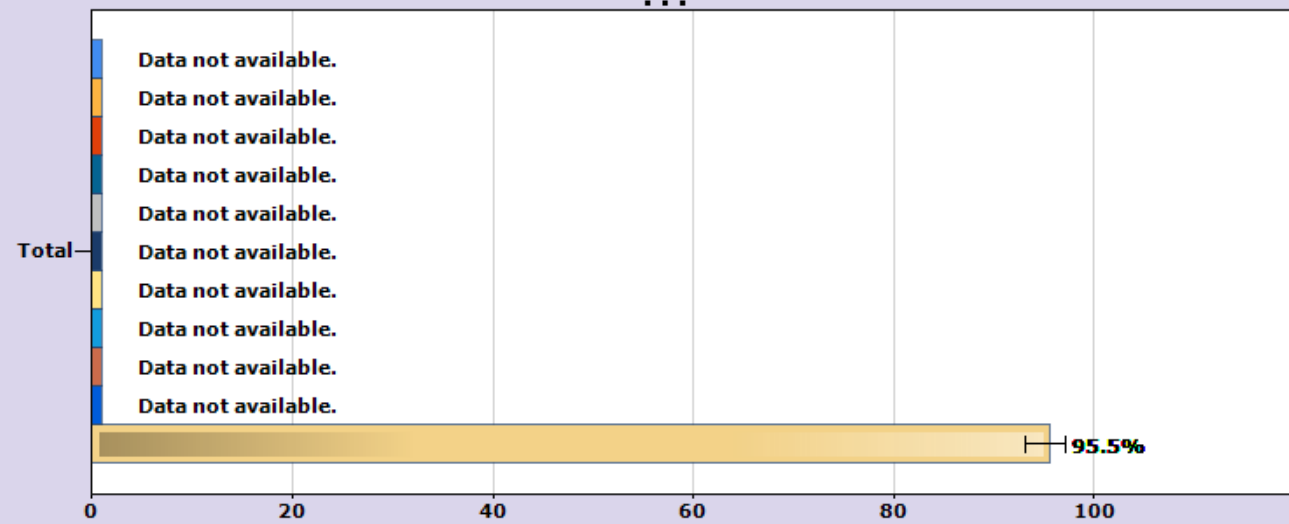
1993 1995 1997 1999 2001 2003 2005 2007 2009 2011



Did not use a shot (e.g., Depo-Provera), patch (e.g., OrthoEvra), or birth control ring (e.g., NuvaRing)
(before last sexual intercourse to prevent pregnancy among students who were currently sexually active)

Massachusetts, High School Youth Risk Behavior Survey

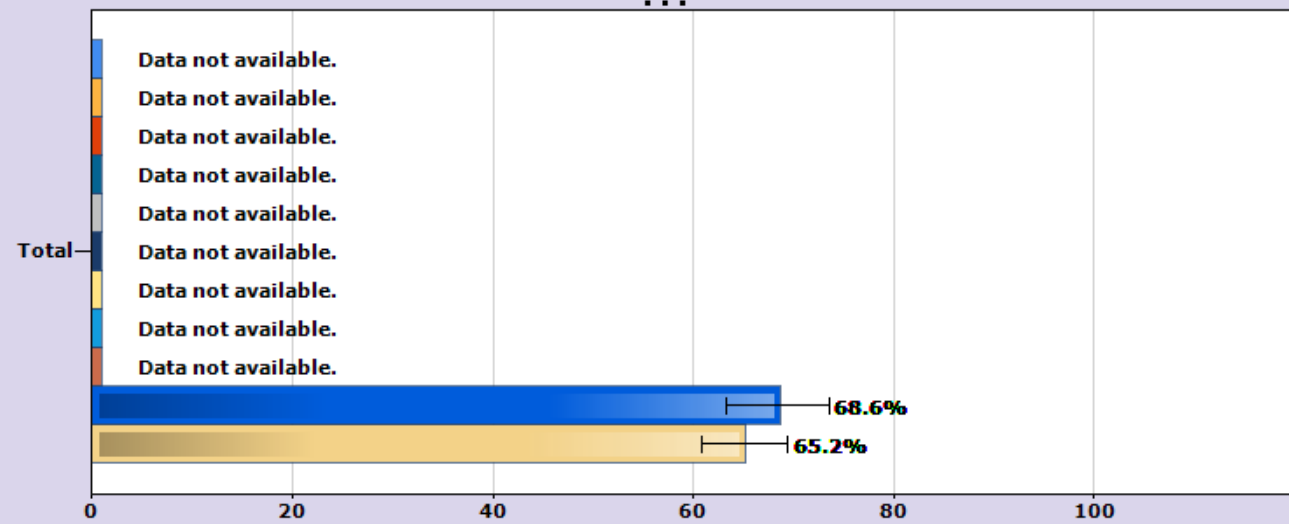
1993 1995 1997 1999 2001 2003 2005 2007 2009 2011



Did not use birth control pills; an IUD or implant; or a shot, patch, or birth control ring
(before last sexual intercourse to prevent pregnancy among students who were currently sexually active)

Massachusetts, High School Youth Risk Behavior Survey

1993 1995 1997 1999 2001 2003 2005 2007 2009 2011

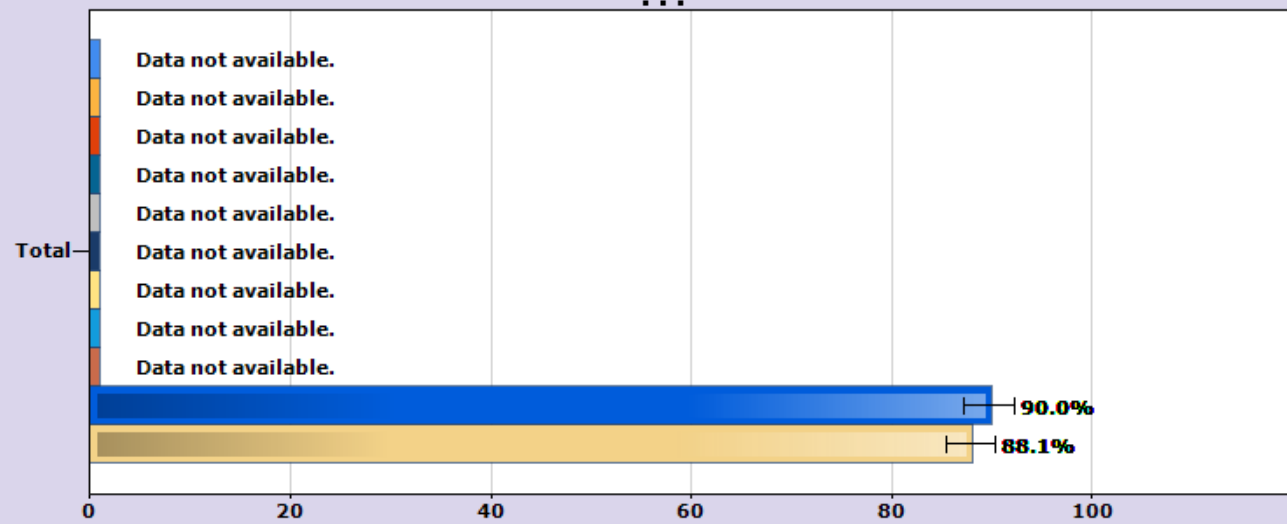


Did not use both a condom during and birth control pills; an IUD or implant; or a shot, patch, or birth control ring before last sexual intercourse

(to prevent STD and pregnancy among students who were currently sexually active)

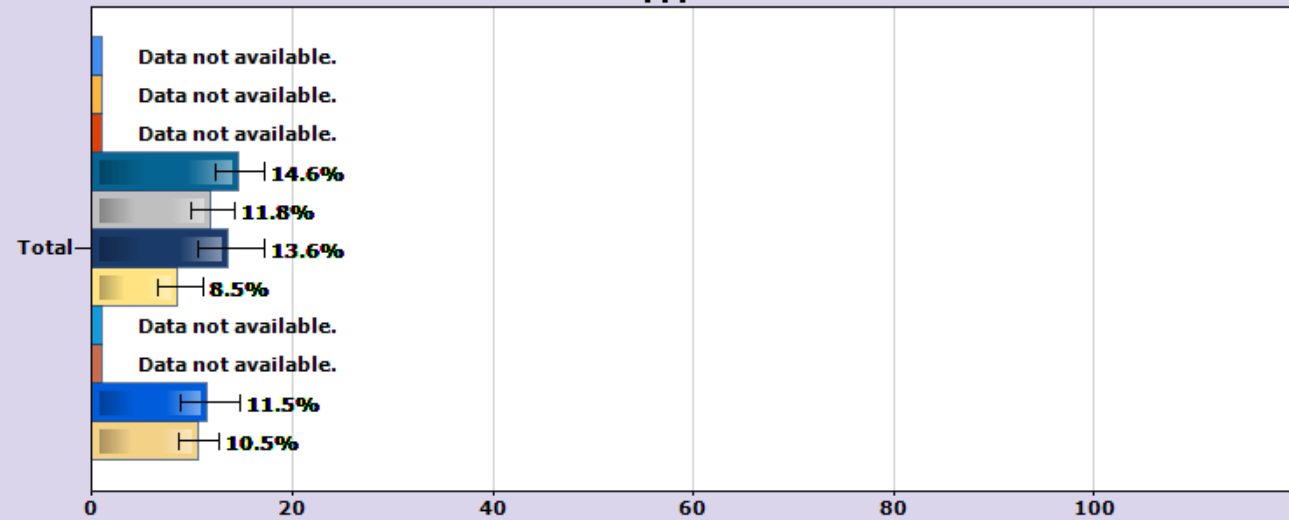
Massachusetts, High School Youth Risk Behavior Survey

1993 1995 1997 1999 2001 2003 2005 2007 2009 2011

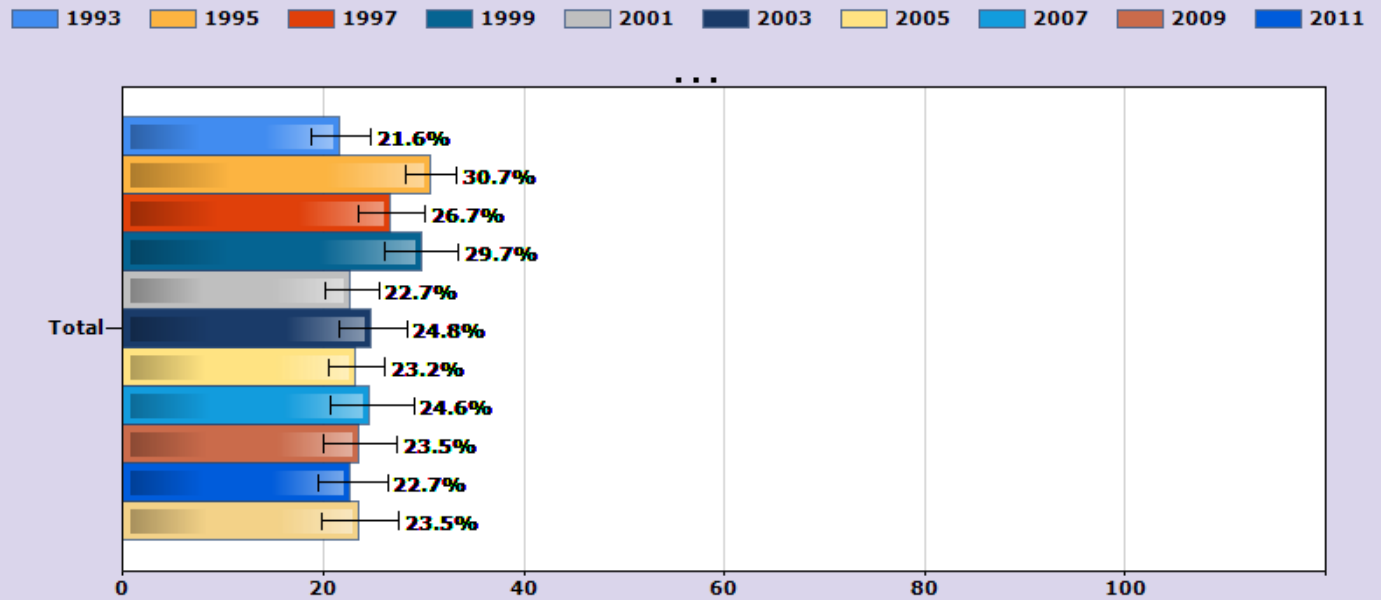


Did not use any method to prevent pregnancy
 (during last sexual intercourse among students who were currently sexually active)
Massachusetts, High School Youth Risk Behavior Survey

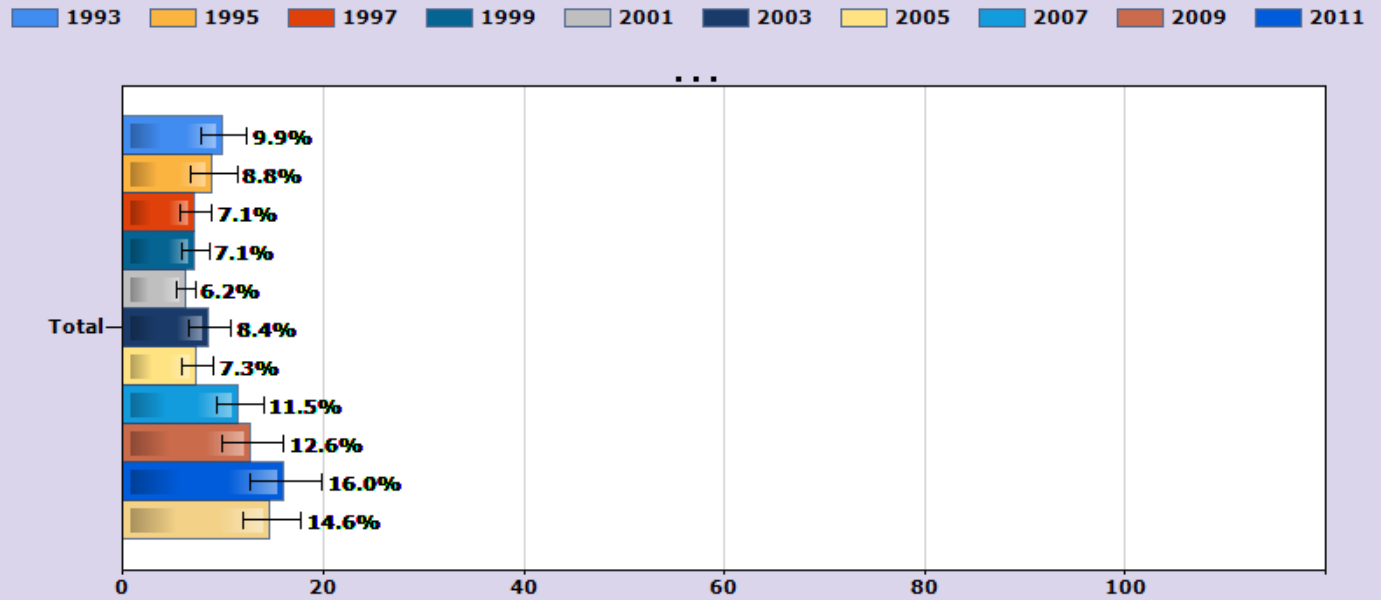
1993 1995 1997 1999 2001 2003 2005 2007 2009 2011



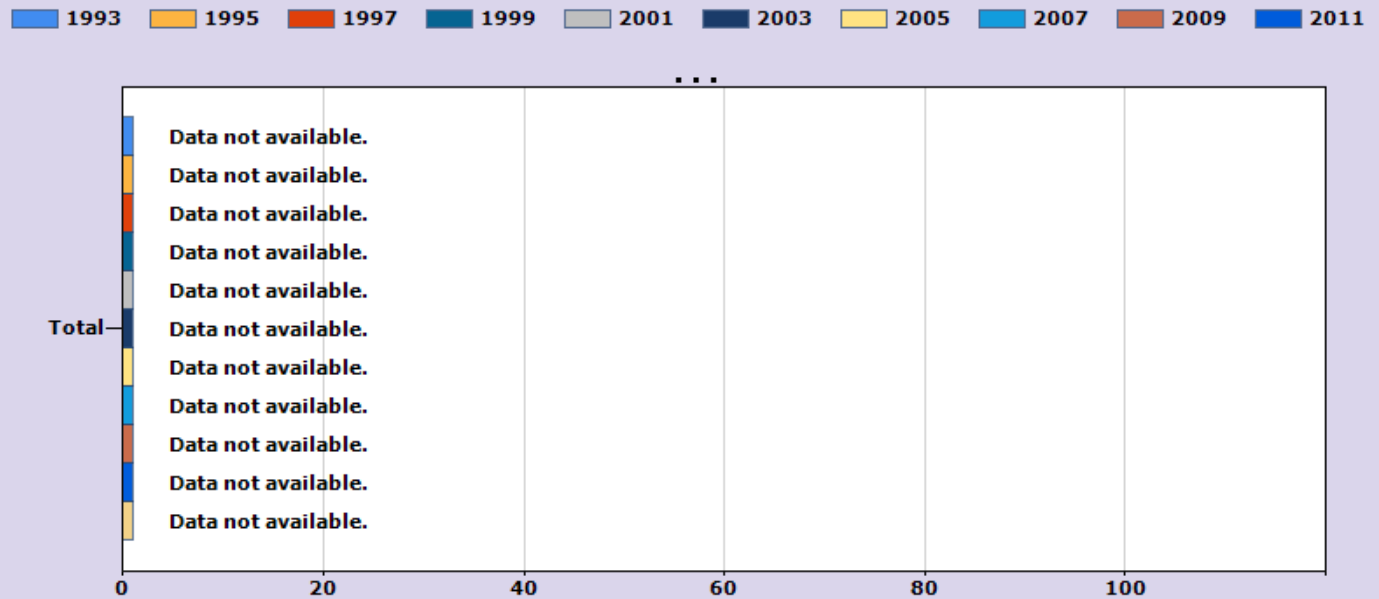
Drank alcohol or used drugs before last sexual intercourse
 (among students who were currently sexually active)
Massachusetts, High School Youth Risk Behavior Survey



Were never taught in school about AIDS or HIV infection Massachusetts, High School Youth Risk Behavior Survey



Were never tested for HIV
 (not including tests done when donating blood)
Massachusetts, High School Youth Risk Behavior Survey



Content Source: [National Center for HIV/AIDS, Viral Hepatitis, STD, and TB Prevention, Division for Adolescent and School Health](#)

Centers for Disease Control and Prevention
 1600 Clifton Rd.
 Atlanta, GA 30333, USA
 800-CDC-INFO (800-232-4636) TTY: (888) 232-6348, 24 Hours/Every Day - [Contact CDC-INFO](#)

